

| | | |
|---|--|---|
| <p>భారతప్రభుత్వం , భారతవాతావరణశాఖ (భూవిజ్ఞానమంత్రిత్వశాఖ) వాతావరణకేంద్రం , బేగంపేటవిమానాశ్రయం , హైదరాబాద్ -500 016.</p> |  <p>भारतसरकार भारतीयमौसमविज्ञानविभाग (पृथ्वीविज्ञानमंत्रालय) मौसमविज्ञानकेन्द्र , बेगुम्पेटएअरपोर्ट , हैदराबाद - 500 016.</p> | <p>Government of India India Meteorological Department (Ministry of Earth Sciences) Meteorological Centre , Begumpet Airport , Hyderabad-500 016.</p> |
|---|--|---|

IMPACT BASED HEAVY RAINFALL WARNING FOR DISTRICTS OF TELANGANA

Warning-25 **RED**

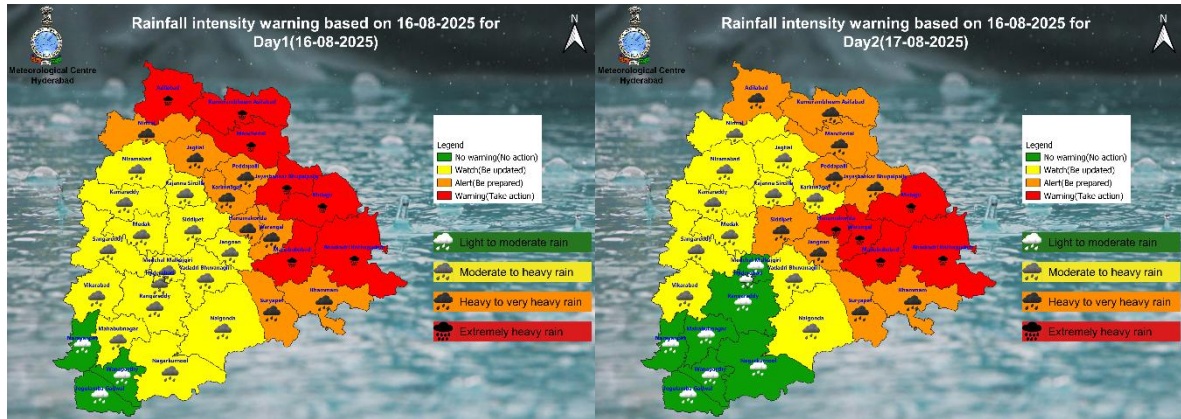
DATE: 16-08-2025

TIME OF ISSUE: 1600 IST

To:

- 1) Chief Secretary, Telangana;
- 2) Spl Chief Secretary (DM), SDMA, Telangana
- 3) Director TGICCC, Hyderabad;
- 4) Concern District Collectors, Telangana
- 5) GHMC Hyderabad

Rainfall intensity warning based for 16-08-2025 and 17-08-2025



DISTRICTS WISE FORECAST AND HEAVY RAINFALL WARNINGS FOR NEXT 5 DAYS

| District | 16-08-2025 | 17-08-2025 | 18-08-2025 | 19-08-2025 | 20-08-2025 |
|--------------------------|---|---|---|---|-----------------------------------|
| Adilabad | Extremely heavy rainfall at isolated places | Heavy to very heavy rainfall at isolated places | Heavy rainfall at isolated places | Heavy to very heavy rainfall at isolated places | Heavy rainfall at isolated places |
| Bkothagudem | Extremely heavy rainfall at isolated places | Extremely heavy rainfall at isolated places | Heavy to very heavy rainfall at isolated places | Heavy rainfall at isolated places | Light to moderate Rainfall |
| Hanumakonda | Heavy to very heavy rainfall at isolated places | Extremely heavy rainfall at isolated places | Heavy to very heavy rainfall at isolated places | Heavy rainfall at isolated places | Light to moderate Rainfall |
| Hyderabad | Heavy rainfall at isolated places | Light to moderate Rainfall | Light to moderate Rainfall | Light to moderate Rainfall | Light to moderate Rainfall |
| Jagitial | Heavy to very heavy rainfall at isolated places | Heavy rainfall at isolated places | Heavy rainfall at isolated places | Heavy rainfall at isolated places | Light to moderate Rainfall |
| Jangaon | Heavy rainfall at isolated places | Heavy to very heavy rainfall at isolated places | Heavy to very heavy rainfall at isolated places | Heavy rainfall at isolated places | Light to moderate Rainfall |
| Jayashankar Bhupalapalle | Extremely heavy rainfall at isolated places | Heavy to very heavy rainfall at isolated places | Heavy rainfall at isolated places | Heavy rainfall at isolated places | Light to moderate Rainfall |
| JogulambaGadwal | Light to moderate Rainfall | Light to moderate Rainfall | Light to moderate Rainfall | Light to moderate Rainfall | Light to moderate Rainfall |
| Kamareddy | Heavy rainfall at isolated places | Heavy rainfall at isolated places | Heavy rainfall at isolated places | Heavy rainfall at isolated places | Light to moderate Rainfall |
| Karimnagar | Heavy to very heavy rainfall at isolated places | Heavy rainfall at isolated places | Heavy rainfall at isolated places | Heavy rainfall at isolated places | Light to moderate Rainfall |
| Khammam | Heavy to very heavy rainfall at isolated places | Heavy to very heavy rainfall at isolated places | Heavy to very heavy rainfall at isolated places | Light to moderate Rainfall | Light to moderate Rainfall |
| KomaramBheem | Extremely heavy rainfall at isolated places | Heavy to very heavy rainfall at isolated places | Heavy rainfall at isolated places | Heavy to very heavy rainfall at isolated places | Heavy rainfall at isolated places |

| | | | | | |
|-------------------|---|---|---|---|-----------------------------------|
| Mahabubabad | Extremely heavy rainfall at isolated places | Extremely heavy rainfall at isolated places | Heavy to very heavy rainfall at isolated places | Light to moderate Rainfall | Light to moderate Rainfall |
| MahabubNagar | Heavy rainfall at isolated places | Light to moderate Rainfall | Light to moderate Rainfall | Light to moderate Rainfall | Light to moderate Rainfall |
| Mancherial | Extremely heavy rainfall at isolated places | Heavy to very heavy rainfall at isolated places | Heavy rainfall at isolated places | Heavy to very heavy rainfall at isolated places | Heavy rainfall at isolated places |
| Medak | Heavy rainfall at isolated places | Heavy rainfall at isolated places | Heavy rainfall at isolated places | Heavy rainfall at isolated places | Light to moderate Rainfall |
| MedchalMalkajgiri | Heavy rainfall at isolated places | Light to moderate Rainfall | Light to moderate Rainfall | Light to moderate Rainfall | Light to moderate Rainfall |
| Mulugu | Extremely heavy rainfall at isolated places | Extremely heavy rainfall at isolated places | Heavy to very heavy rainfall at isolated places | Heavy rainfall at isolated places | Light to moderate Rainfall |
| NagarKurnool | Heavy rainfall at isolated places | Light to moderate Rainfall | Light to moderate Rainfall | Light to moderate Rainfall | Light to moderate Rainfall |
| Nalgonda | Heavy rainfall at isolated places | Heavy rainfall at isolated places | Heavy rainfall at isolated places | Light to moderate Rainfall | Light to moderate Rainfall |
| Narayanpet | Light to moderate Rainfall | Light to moderate Rainfall | Light to moderate Rainfall | Light to moderate Rainfall | Light to moderate Rainfall |
| Nirmal | Heavy to very heavy rainfall at isolated places | Heavy rainfall at isolated places | Heavy rainfall at isolated places | Heavy to very heavy rainfall at isolated places | Light to moderate Rainfall |
| Nizamabad | Heavy rainfall at isolated places | Heavy rainfall at isolated places | Heavy rainfall at isolated places | Heavy rainfall at isolated places | Light to moderate Rainfall |
| Peddapalle | Heavy to very heavy rainfall at isolated places | Heavy to very heavy rainfall at isolated places | Heavy rainfall at isolated places | Heavy rainfall at isolated places | Light to moderate Rainfall |
| RajannaSiricilla | Heavy rainfall at isolated places | Heavy rainfall at isolated places | Heavy rainfall at isolated places | Heavy rainfall at isolated places | Light to moderate Rainfall |

| | | | | | |
|--------------------|---|---|---|-----------------------------------|----------------------------|
| Rangareddy | Heavy rainfall at isolated places | Light to moderate Rainfall | Light to moderate Rainfall | Light to moderate Rainfall | Light to moderate Rainfall |
| SangaReddy | Heavy rainfall at isolated places | Heavy rainfall at isolated places | Light to moderate Rainfall | Heavy rainfall at isolated places | Light to moderate Rainfall |
| Siddipet | Heavy rainfall at isolated places | Heavy to very heavy rainfall at isolated places | Heavy to very heavy rainfall at isolated places | Light to moderate Rainfall | Light to moderate Rainfall |
| Suryapet | Heavy to very heavy rainfall at isolated places | Heavy to very heavy rainfall at isolated places | Heavy rainfall at isolated places | Light to moderate Rainfall | Light to moderate Rainfall |
| Vikarabad | Heavy rainfall at isolated places | Heavy rainfall at isolated places | Light to moderate Rainfall | Heavy rainfall at isolated places | Light to moderate Rainfall |
| Wanaparthy | Light to moderate Rainfall | Light to moderate Rainfall | Light to moderate Rainfall | Light to moderate Rainfall | Light to moderate Rainfall |
| Warangal | Heavy to very heavy rainfall at isolated places | Extremely heavy rainfall at isolated places | Heavy to very heavy rainfall at isolated places | Heavy rainfall at isolated places | Light to moderate Rainfall |
| yadadribhuvanagiri | Heavy rainfall at isolated places | Heavy rainfall at isolated places | Heavy rainfall at isolated places | Light to moderate Rainfall | Light to moderate Rainfall |

Impact Based forecast for Day 1 (16.08.2025):

| Districts/Clusters | Forecast | Impact expected | Activity Suggested |
|--------------------|----------|-----------------|--------------------|
|--------------------|----------|-----------------|--------------------|

| | | | |
|-----------------------|---|---|--|
| Adilabad | Extremely heavy rainfall likely to occur at isolated places | 1.Blocking/washout of Roads and Bridges ,Railway Lines 2. Severe flood occurs in the District , Damage occurs in the Irrigation Projects 3. Community services like electricity, water etc will be affected at large 4. Major Damage to agriculture and horticulture crop and plantation. 5.Multiple instances of damage to life and property 6. severe effect on Floura and Fauna | Restricted movement. • Necessary advisory may be issued by Municipal corporation for displaying the warnings and necessary action for clearing water. • Necessary advisory may be issued by road, rail and air traffic department for traffic regulation. • Response force may be advised to take necessary action. • Electricity and water department may be advised. |
| KumaramBheem Asifabad | Extremely heavy rainfall likely to occur at isolated places | 1.Blocking/washout of Roads and Bridges 2. Severe flood occurs in Middle Godavri River , Damage occurs in the Irrigation Projects 3. Community services like electricity, water etc will be affected at large 4. Major Damage to agriculture and horticulture crop and plantation. 5.Multiple instances of damage to life and property 6. severe effect on Floura and Fauna | Restricted movement. • Necessary advisory may be issued by Municipal corporation for displaying the warnings and necessary action for clearing water. • Necessary advisory may be issued by road, rail and air traffic department for traffic regulation. • Response force may be advised to take necessary action. • Electricity and water department may be advised. |

| | | | |
|------------|---|--|--|
| Mancherial | Extremely heavy rainfall likely to occur at isolated places | 1.Blocking/washout of Roads and Bridges 2. Severe flood occurs in godavari River , Damage occurs in thekaleswaram lift irrigation project 3. Community services like electricity, water etc will be affected at large.sevre efeect in the singareni collieries and mining 4. Major Damage to agriculture and horticulture crop and plantation. 5.Multiple instances of damage to life and property 6. severe effect on Floura and Fauna | Restricted movement. • Necessary advisory may be issued by Municipal corporation for displaying the warnings and necessary action for clearing water. • Necessary advisory may be issued by road, rail and air traffic department for traffic regulation. • Response force may be advised to take necessary action. • Electricity and water department may be advised. |
| Nirmal | Heavy to Very Heavy Rainfall likely at isolated places | 1. Mudslides due to heavy rain or intense rainfall at many places. 2.Supply & transportation will be affected at a few to many places for few hours to days in hills, Community services like electricity, water etc will be affected 3.Damage to agriculture and horticulture crop and plantation 4 Isolated instances of damage to life and property | Restricted movement. • Necessary advisory may be issued by Municipal corporation for displaying the warnings and necessary action for clearing water. • Necessary advisory may be issued by road, rail traffic department for traffic regulation. • Response force may be advised to take necessary action. • Electricity and water department may be advised. |
| Nizamabad | Heavy Rainfall likely at isolated places | 1.Minor damage to agriculture and horticulture crop and plantation 2. Water Logging in low lying areas | Restricted movement. • Necessary advisory may be issued by Municipal corporation for displaying the warnings and necessary action for clearing water. • Necessary advisory may be issued by road, rail traffic department for traffic regulation. • Response force may be advised to take necessary action. |

| | | | |
|-------------------|--|---|--|
| Jagital | Heavy to Very Heavy Rainfall likely at isolated places | 1. Mudslides due to heavy rain or intense rainfall at many places. 2. Supply & transportation will be affected at a few to many places for few hours to days in hills, Community services like electricity, water etc will be affected 3. Damage to agriculture and horticulture crop and plantation 4 Isolated instances of damage to life and property | Restricted movement. • Necessary advisory may be issued by Municipal corporation for displaying the warnings and necessary action for clearing water. • Necessary advisory may be issued by road, rail traffic department for traffic regulation. • Response force may be advised to take necessary action. • Electricity and water department may be advised. |
| Rajanaa Siricilla | Heavy Rainfall likely at isolated places | 1. Minor damage to agriculture and horticulture crop and plantation 2. Water Logging in low lying areas | Restricted movement. • Necessary advisory may be issued by Municipal corporation for displaying the warnings and necessary action for clearing water. • Necessary advisory may be issued by road, rail traffic department for traffic regulation. • Response force may be advised to take necessary action. |
| Karimnagar | Heavy to Very Heavy Rainfall likely at isolated places | 1. Mudslides due to heavy rain or intense rainfall at many places. 2. Supply & transportation will be affected at a few to many places for few hours to days in hills, Community services like electricity, water etc will be affected 3. Damage to agriculture and horticulture crop and plantation 4 Isolated instances of damage to life and property | Restricted movement. • Necessary advisory may be issued by Municipal corporation for displaying the warnings and necessary action for clearing water. • Necessary advisory may be issued by road, rail traffic department for traffic regulation. • Response force may be advised to take necessary action. • Electricity and water department may be advised. |

| | | | |
|--------------------------|---|--|---|
| Peddapalli | Heavy to Very Heavy Rainfall likely at isolated places | <ol style="list-style-type: none"> 1. Mudslides due to heavy rain or intense rainfall at many places. 2. Supply & transportation will be affected at a few to many places for few hours to days in hills, Community services like electricity, water etc will be affected 3. Damage to agriculture and horticulture crop and plantation 4 Isolated instances of damage to life and property | <p>Restricted movement. • Necessary advisory may be issued by Municipal corporation for displaying the warnings and necessary action for clearing water. • Necessary advisory may be issued by road, rail traffic department for traffic regulation. • Response force may be advised to take necessary action. • Electricity and water department may be advised.</p> |
| Jayshankar Bhupalapalley | Extremely heavy rainfall likely to occur at isolated places | <ol style="list-style-type: none"> 1. Blocking/washout of Roads and Bridges 2. Severe flood occurs in Maneru River , 3. Community services like electricity, water etc will be affected at large 4. Major Damage to agriculture and horticulture crop and plantation. 5. Multiple instances of damage to life and property 6. severe effect on Floura and Fauna | <p>Restricted movement. • Necessary advisory may be issued by Municipal corporation for displaying the warnings and necessary action for clearing water. • Necessary advisory may be issued by road, rail and air traffic department for traffic regulation. • Response force may be advised to take necessary action. • Electricity and water department may be advised.</p> |
| Mulugu | Extremely heavy rainfall likely to occur at isolated places | <ol style="list-style-type: none"> 1. Blocking/washout of Roads and Bridges 2. Severe flood occurs in Lower Godavari River , Damage occurs in the Irrigation Projects 3. Community services like electricity, water etc will be affected at large 4. Major Damage to agriculture and horticulture crop and plantation. 5. Multiple instances of damage to life and property 6. severe effect on Floura and Fauna | <p>Restricted movement. • Necessary advisory may be issued by Municipal corporation for displaying the warnings and necessary action for clearing water. • Necessary advisory may be issued by road, rail and air traffic department for traffic regulation. • Response force may be advised to take necessary action. • Electricity and water department may be advised.</p> |

| | | | |
|------------------------|---|---|--|
| Badradri Kothagudem | Extremely heavy rainfall likely to occur at isolated places | 1.Blocking/washout of Roads,Bridges, Damage in Railway Lines 2. Severe flood occurs in Plains , 3. Community services like electricity, water etc will be affected at large 4. Major Damage to agriculture and horticulture crop and plantation. 5.Multiple instances of damage to life and property 6. severe effect on Floura and Fauna | Restricted movement. • Necessary advisory may be issued by Municipal corporation for displaying the warnings and necessary action for clearing water. • Necessary advisory may be issued by road, rail and air traffic department for traffic regulation. • Response force may be advised to take necessary action. • Electricity and water department may be advised. |
| Khammam | Heavy to Very Heavy Rainfall likely at isolated places | 1. Mudslides due to heavy rain or intense rainfall at many places. 2.Supply & transportation will be affected at a few to many places for few hours to days in hills, Community services like electricity, water etc will be affected 3.Damage to agriculture and horticulture crop and plantation 4 Isolated instances of damage to life and property | Restricted movement. • Necessary advisory may be issued by Municipal corporation for displaying the warnings and necessary action for clearing water. • Necessary advisory may be issued by road, rail traffic department for traffic regulation. • Response force may be advised to take necessary action. • Electricity and water department may be advised. |
| Nalgonda | Heavy Rainfall likely at isolated places | 1.Minor damage to agriculture and horticulture crop and plantation 2. Water Logging in low lying areas | Restricted movement. • Necessary advisory may be issued by Municipal corporation for displaying the warnings and necessary action for clearing water. • Necessary advisory may be issued by road, rail traffic department for traffic regulation. • Response force may be advised to take necessary action. |

| | | | |
|------------|---|---|---|
| suryapet | Heavy to Very Heavy Rainfall likely at isolated places | <ol style="list-style-type: none"> 1. Road Blockages /Washout of Roads due to heavy rain or intense rainfall at many places.. 2. Supply & transportation will be affected at a few to many places for few hours to days in hills, Community services like electricity, water etc will be affected 3. Damage to agriculture and horticulture crop and plantation 4 Isolated instances of damage to life and property | <p>Restricted movement. • Necessary advisory may be issued by Municipal corporation for displaying the warnings and necessary action for clearing water. • Necessary advisory may be issued by road, rail traffic department for traffic regulation. • Response force may be advised to take necessary action. • Electricity and water department may be advised.</p> |
| Mahbubabad | Extremely heavy rainfall likely to occur at isolated places | <ol style="list-style-type: none"> 1. Blocking/washout of Roads, Bridges Damage in Railway Lines 2. Severe flood occurs in Plains , 3. Community services like electricity, water etc will be affected at large 4. Major Damage to agriculture and horticulture crop and plantation. 5. Multiple instances of damage to life and property 6. severe effect on Flora and Fauna | <p>Restricted movement. • Necessary advisory may be issued by Municipal corporation for displaying the warnings and necessary action for clearing water. • Necessary advisory may be issued by road, rail and air traffic department for traffic regulation. • Response force may be advised to take necessary action. • Electricity and water department may be advised.</p> |
| Warangal | Heavy to Very Heavy Rainfall likely at isolated places | <ol style="list-style-type: none"> 1. Mudslides due to heavy rain or intense rainfall at many places. 2. Supply & transportation will be affected at a few to many places for few hours to days in hills, Community services like electricity, water etc will be affected 3. Damage to agriculture and horticulture crop and plantation 4 Isolated instances of damage to life and property | <p>Restricted movement. • Necessary advisory may be issued by Municipal corporation for displaying the warnings and necessary action for clearing water. • Necessary advisory may be issued by road, rail traffic department for traffic regulation. • Response force may be advised to take necessary action. • Electricity and water department may be advised.</p> |

| | | | |
|-------------|--|--|---|
| Hanumakonda | Heavy to Very Heavy Rainfall likely at isolated places | <p>1. Mudslides due to heavy rain or intense rainfall at many places.</p> <p>2. Supply & transportation will be affected at a few to many places for few hours to days in hills, Community services like electricity, water etc will be affected</p> <p>3. Damage to agriculture and horticulture crop and plantation</p> <p>4 Isolated instances of damage to life and property</p> | <p>Restricted movement. • Necessary advisory may be issued by Municipal corporation for displaying the warnings and necessary action for clearing water. • Necessary advisory may be issued by road, rail traffic department for traffic regulation. • Response force may be advised to take necessary action. • Electricity and water department may be advised.</p> |
| Jangaon | Heavy Rainfall likely at isolated places | <p>1. Minor damage to agriculture and horticulture crop and plantation</p> <p>2. Water Logging in low lying areas</p> | <p>Restricted movement. • Necessary advisory may be issued by Municipal corporation for displaying the warnings and necessary action for clearing water. • Necessary advisory may be issued by road, rail traffic department for traffic regulation. • Response force may be advised to take necessary action.</p> |
| Siddipet | Heavy Rainfall likely at isolated places | <p>1. Minor damage to agriculture and horticulture crop and plantation</p> <p>2. Water Logging in low lying areas</p> | <p>Restricted movement. • Necessary advisory may be issued by Municipal corporation for displaying the warnings and necessary action for clearing water. • Necessary advisory may be issued by road, rail traffic department for traffic regulation. • Response force may be advised to take necessary action.</p> |

| | | | |
|------------------------|--|---|---|
| Yadadri Bhuvanagiri | Heavy Rainfall likely at isolated places | 1.Minor damage to agriculture and horticulture crop and plantation 2. Water Logging in low lying areas | Restricted movement. • Necessary advisory may be issued by Municipal corporation for displaying the warnings and necessary action for clearing water. • Necessary advisory may be issued by road, rail traffic department for traffic regulation. • Response force may be advised to take necessary action. |
| Rangareddy | Heavy Rainfall likely at isolated places | 1.Minor damage to agriculture and horticulture crop and plantation 2. Water Logging in low lying areas | Restricted movement. • Necessary advisory may be issued by Municipal corporation for displaying the warnings and necessary action for clearing water. • Necessary advisory may be issued by road, rail traffic department for traffic regulation. • Response force may be advised to take necessary action. |
| Hyderabad | Heavy Rainfall likely at isolated places | Localized water logging Traffic congestion (20-30 mins more travel time) Danger of electrocution due unsecured power lines. | Restricted movement. • Necessary advisory may be issued by Municipal corporation for displaying the warnings and necessary action for clearing water. • Necessary advisory may be issued by road, rail traffic department for traffic regulation. • Response force may be advised to take necessary action. |
| Medchal-Malkajgiri | Heavy Rainfall likely at isolated places | 1.Minor damage to agriculture and horticulture crop and plantation 2. Water Logging in low lying areas | Restricted movement. • Necessary advisory may be issued by Municipal corporation for displaying the warnings and necessary action for clearing water. • Necessary advisory may be issued by road, rail traffic department for traffic regulation. • Response force may be advised to take necessary action. |

| | | | |
|------------|--|---|---|
| Vikarabad | Heavy Rainfall likely at isolated places | 1.Minor damage to agriculture and horticulture crop and plantation 2. Water Logging in low lying areas | Restricted movement. • Necessary advisory may be issued by Municipal corporation for displaying the warnings and necessary action for clearing water. • Necessary advisory may be issued by road, rail traffic department for traffic regulation. • Response force may be advised to take necessary action. |
| Sangareddy | Heavy Rainfall likely at isolated places | 1.Minor damage to agriculture and horticulture crop and plantation 2. Water Logging in low lying areas | Restricted movement. • Necessary advisory may be issued by Municipal corporation for displaying the warnings and necessary action for clearing water. • Necessary advisory may be issued by road, rail traffic department for traffic regulation. • Response force may be advised to take necessary action. |
| Medak | Heavy Rainfall likely at isolated places | 1.Minor damage to agriculture and horticulture crop and plantation 2. Water Logging in low lying areas | Restricted movement. • Necessary advisory may be issued by Municipal corporation for displaying the warnings and necessary action for clearing water. • Necessary advisory may be issued by road, rail traffic department for traffic regulation. • Response force may be advised to take necessary action. |
| Kamareddy | Heavy Rainfall likely at isolated places | 1.Minor damage to agriculture and horticulture crop and plantation 2. Water Logging in low lying areas | Restricted movement. • Necessary advisory may be issued by Municipal corporation for displaying the warnings and necessary action for clearing water. • Necessary advisory may be issued by road, rail traffic department for traffic regulation. • Response force may be advised to take necessary action. |

| | | | |
|------------------|---|---|---|
| Mahabubnagar | Heavy Rainfall likely at isolated places | 1.Minor damage to agriculture and horticulture crop and plantation 2. Water Logging in low lying areas | Restricted movement. • Necessary advisory may be issued by Municipal corporation for displaying the warnings and necessary action for clearing water. • Necessary advisory may be issued by road, rail traffic department for traffic regulation. • Response force may be advised to take necessary action. |
| Nagar Kurnool | Heavy Rainfall likely at isolated places | 1.Minor damage to agriculture and horticulture crop and plantation 2. Water Logging in low lying areas | Restricted movement. • Necessary advisory may be issued by Municipal corporation for displaying the warnings and necessary action for clearing water. • Necessary advisory may be issued by road, rail traffic department for traffic regulation. • Response force may be advised to take necessary action. |
| Wanaparthi | Light to Moderate rain likely to occur at Isolated places | NIL | NIL |
| Narayanpet | Light to Moderate rain likely to occur at Isolated places | NIL | NIL |
| Jogulamba Gadwal | Light to Moderate rain likely to occur at Isolated places | NIL | NIL |

Impact Based forecast for Day 2 (17.08.2025) :

| Districts/Clusters | Forecast | Impact expected | Activity Suggested |
|--------------------|----------|-----------------|--------------------|
|--------------------|----------|-----------------|--------------------|

| | | | |
|-----------------------|--|--|--|
| Adilabad | Heavy to Very Heavy Rainfall likely at isolated places | 1. Mudslides due to heavy rain or intense rainfall at many places. 2. Supply & transportation will be affected at a few to many places for few hours to days in hills 3. Damage to agriculture and horticulture crop and plantation 4. Isolated instances of damage to life and property | Restricted movement. • Necessary advisory may be issued by Municipal corporation for displaying the warnings and necessary action for clearing water. • Necessary advisory may be issued by road, rail traffic department for traffic regulation. • Response force may be advised to take necessary action. • Electricity and water department may be advised. |
| KumaramBheem Asifabad | Heavy to Very Heavy Rainfall likely at isolated places | 1. Mudslides due to heavy rain or intense rainfall at many places. 2. Supply & transportation will be affected at a few to many places for few hours to days in hills, Community services like electricity, water etc will be affected 3. Damage to agriculture and horticulture crop and plantation 4. Isolated instances of damage to life and property | Restricted movement. • Necessary advisory may be issued by Municipal corporation for displaying the warnings and necessary action for clearing water. • Necessary advisory may be issued by road, rail traffic department for traffic regulation. • Response force may be advised to take necessary action. • Electricity and water department may be advised. |
| Mancherial | Heavy to Very Heavy Rainfall likely at isolated places | 1. Mudslides due to heavy rain or intense rainfall at many places. 2. Supply & transportation will be affected at a few to many places for few hours to days in hills, Community services like electricity, water etc will be affected 3. Damage to agriculture and horticulture crop and plantation 4. Isolated instances of damage to life and property | Restricted movement. • Necessary advisory may be issued by Municipal corporation for displaying the warnings and necessary action for clearing water. • Necessary advisory may be issued by road, rail traffic department for traffic regulation. • Response force may be advised to take necessary action. • Electricity and water department may be advised. |

| | | | |
|-------------------|--|---|---|
| Nirmal | Heavy Rainfall likely at isolated places | 1.Minor damage to agriculture and horticulture crop and plantation 2. Water Logging in low lying areas | Restricted movement. • Necessary advisory may be issued by Municipal corporation for displaying the warnings and necessary action for clearing water. • Necessary advisory may be issued by road, rail traffic department for traffic regulation. • Response force may be advised to take necessary action. |
| Nizamabad | Heavy Rainfall likely at isolated places | 1.Minor damage to agriculture and horticulture crop and plantation 2. Water Logging in low lying areas | Restricted movement. • Necessary advisory may be issued by Municipal corporation for displaying the warnings and necessary action for clearing water. • Necessary advisory may be issued by road, rail traffic department for traffic regulation. • Response force may be advised to take necessary action. |
| Jagital | Heavy Rainfall likely at isolated places | 1.Minor damage to agriculture and horticulture crop and plantation 2. Water Logging in low lying areas | Restricted movement. • Necessary advisory may be issued by Municipal corporation for displaying the warnings and necessary action for clearing water. • Necessary advisory may be issued by road, rail traffic department for traffic regulation. • Response force may be advised to take necessary action. |
| Rajanaa Siricilla | Heavy Rainfall likely at isolated places | 1.Minor damage to agriculture and horticulture crop and plantation 2. Water Logging in low lying areas | Restricted movement. • Necessary advisory may be issued by Municipal corporation for displaying the warnings and necessary action for clearing water. • Necessary advisory may be issued by road, rail traffic department for traffic regulation. • Response force may be advised to take necessary action. |

| | | | |
|--------------------------|--|---|--|
| Karimnagar | Heavy Rainfall likely at isolated places | 1.Minor damage to agriculture and horticulture crop and plantation 2. Water Logging in low lying areas | Restricted movement. • Necessary advisory may be issued by Municipal corporation for displaying the warnings and necessary action for clearing water. • Necessary advisory may be issued by road, rail traffic department for traffic regulation. • Response force may be advised to take necessary action. |
| Peddapalli | Heavy to Very Heavy Rainfall likely at isolated places | 1. Mudslides due to heavy rain or intense rainfall at many places. 2.Supply & transportation will be affected at a few to many places for few hours to days in hills, Community services like electricity, water etc will be affected 3.Damage to agriculture and horticulture crop and plantation 4 Isolated instances of damage to life and property | Restricted movement. • Necessary advisory may be issued by Municipal corporation for displaying the warnings and necessary action for clearing water. • Necessary advisory may be issued by road, rail traffic department for traffic regulation. • Response force may be advised to take necessary action. • Electricity and water department may be advised. |
| Jayshankar Bhupalapalley | Heavy to Very Heavy Rainfall likely at isolated places | 1. Mudslides due to heavy rain or intense rainfall at many places. 2.Supply & transportation will be affected at a few to many places for few hours to days in hills, Community services like electricity, water etc will be affected 3.Damage to agriculture and horticulture crop and plantation 4 Isolated instances of damage to life and property | Restricted movement. • Necessary advisory may be issued by Municipal corporation for displaying the warnings and necessary action for clearing water. • Necessary advisory may be issued by road, rail traffic department for traffic regulation. • Response force may be advised to take necessary action. • Electricity and water department may be advised. |

| | | | |
|---------------------|---|--|---|
| Mulugu | Extremely heavy rainfall likely to occur at isolated places | <ol style="list-style-type: none"> 1.Blocking/washout of Roads and Bridges 2. Severe flood occurs in Lower Godavari River , Damage occurs in the Irrigation Projects 3. Community services like electricity, water etc will be affected at large 4. Major Damage to agriculture and horticulture crop and plantation. 5.Multiple instances of damage to life and property 6. severe effect on Flaura and Fauna | <p>Restricted movement. • Necessary advisory may be issued by Municipal corporation for displaying the warnings and necessary action for clearing water. • Necessary advisory may be issued by road, rail and air traffic department for traffic regulation. • Response force may be advised to take necessary action. • Electricity and water department may be advised.</p> |
| Badradri Kothagudem | Extremely heavy rainfall likely to occur at isolated places | <ol style="list-style-type: none"> 1.Blocking/washout of Roads,Bridges, Damge in Railway Lines 2. Severe flood occurs in Plains , 3. Community services like electricity, water etc will be affected at large 4. Major Damage to agriculture and horticulture crop and plantation. 5.Multiple instances of damage to life and property 6. severe effect on Flaura and Fauna | <p>Restricted movement. • Necessary advisory may be issued by Municipal corporation for displaying the warnings and necessary action for clearing water. • Necessary advisory may be issued by road, rail and air traffic department for traffic regulation. • Response force may be advised to take necessary action. • Electricity and water department may be advised.</p> |
| Khammam | Heavy to Very Heavy Rainfall likely at isolated places | <ol style="list-style-type: none"> 1. Mudslides due to heavy rain or intense rainfall at many places. 2.Supply & transportation will be affected at a few to many places for few hours to days in hills, Community services like electricity, water etc will be affected 3.Damage to agriculture and horticulture crop and plantation 4 Isolated instances of damage to life and property | <p>Restricted movement. • Necessary advisory may be issued by Municipal corporation for displaying the warnings and necessary action for clearing water. • Necessary advisory may be issued by road, rail traffic department for traffic regulation. • Response force may be advised to take necessary action. • Electricity and water department may be advised.</p> |

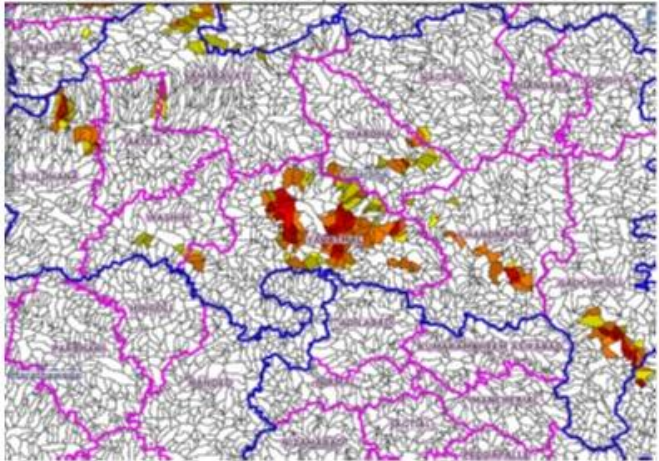
| | | | |
|------------|---|---|--|
| Nalgonda | Heavy Rainfall likely at isolated places | 1.Minor damage to agriculture and horticulture crop and plantation 2. Water Logging in low lying areas | Restricted movement. • Necessary advisory may be issued by Municipal corporation for displaying the warnings and necessary action for clearing water. • Necessary advisory may be issued by road, rail traffic department for traffic regulation. • Response force may be advised to take necessary action. |
| suryapet | Heavy to Very Heavy Rainfall likely at isolated places | 1. Road Blockages /Washout of Roads due to heavy rain or intense rainfall at many places.. 2.Supply & transportation will be affected at a few to many places for few hours to days in hills, Community services like electricity, water etc will be affected 3.Damage to agriculture and horticulture crop and plantation 4 Isolated instances of damage to life and property | Restricted movement. • Necessary advisory may be issued by Municipal corporation for displaying the warnings and necessary action for clearing water. • Necessary advisory may be issued by road, rail traffic department for traffic regulation. • Response force may be advised to take necessary action. • Electricity and water department may be advised. |
| Mahbubabad | Extremely heavy rainfall likely to occur at isolated places | 1.Blocking/washout of Roads, Bridges Damage in Railway Lines 2. Severe flood occurs in Plains , 3. Community services like electricity, water etc will be affected at large 4. Major Damage to agriculture and horticulture crop and plantation. 5.Multiple instances of damage to life and property 6. severe effect on Flora and Fauna | Restricted movement. • Necessary advisory may be issued by Municipal corporation for displaying the warnings and necessary action for clearing water. • Necessary advisory may be issued by road, rail and air traffic department for traffic regulation. • Response force may be advised to take necessary action. • Electricity and water department may be advised. |

| | | | |
|-------------|---|--|--|
| Warangal | Extremely heavy rainfall likely to occur at isolated places | 1.Blocking/washout of Roads and Bridges , Damage occurs in Railway Lines 2. Severe flood occurs in kada River , Damage occurs in the Irrigation Projects 3. Community services like electricity, water etc will be affected at large 4. Major Damage to agriculture and horticulture crop and plantation. 5.Multiple instances of damage to life and property 6. severe effect on Flora and Fauna | Restricted movement. • Necessary advisory may be issued by Municipal corporation for displaying the warnings and necessary action for clearing water. • Necessary advisory may be issued by road, rail and air traffic department for traffic regulation. • Response force may be advised to take necessary action. • Electricity and water department may be advised. |
| Hanumakonda | Extremely heavy rainfall likely to occur at isolated places | 1.Blocking/washout of Roads ,Damage occurs in Railway Lines 2. Severe flood occurs in Plains , 3. Community services like electricity, water etc will be affected at large 4. Major Damage to agriculture and horticulture crop and plantation. 5.Multiple instances of damage to life and property 6. severe effect on Flora and Fauna | Restricted movement. • Necessary advisory may be issued by Municipal corporation for displaying the warnings and necessary action for clearing water. • Necessary advisory may be issued by road, rail and air traffic department for traffic regulation. • Response force may be advised to take necessary action. • Electricity and water department may be advised. |
| Jangaon | Heavy to Very Heavy Rainfall likely at isolated places | 1. Road Blockages /Washout of Roads due to heavy rain or intense rainfall at many places.. 2.Supply & transportation will be affected at a few to many places for few hours to days in hills, Community services like electricity, water etc will be affected 3.Damage to agriculture and horticulture crop and plantation 4 Isolated instances of damage to life and property | Restricted movement. • Necessary advisory may be issued by Municipal corporation for displaying the warnings and necessary action for clearing water. • Necessary advisory may be issued by road, rail traffic department for traffic regulation. • Response force may be advised to take necessary action. • Electricity and water department may be advised. |

| | | | |
|---------------------|---|--|--|
| Siddipet | Heavy to Very Heavy Rainfall likely at isolated places | 1. Mudslides due to heavy rain or intense rainfall at many places. 2. Supply & transportation will be affected at a few to many places for few hours to days in hills, Community services like electricity, water etc will be affected 3. Damage to agriculture and horticulture crop and plantation 4. Isolated instances of damage to life and property | Restricted movement. • Necessary advisory may be issued by Municipal corporation for displaying the warnings and necessary action for clearing water. • Necessary advisory may be issued by road, rail traffic department for traffic regulation. • Response force may be advised to take necessary action. • Electricity and water department may be advised. |
| Yadadri Bhuvanagiri | Heavy Rainfall likely at isolated places | 1. Minor damage to agriculture and horticulture crop and plantation 2. Water Logging in low lying areas | Restricted movement. • Necessary advisory may be issued by Municipal corporation for displaying the warnings and necessary action for clearing water. • Necessary advisory may be issued by road, rail traffic department for traffic regulation. • Response force may be advised to take necessary action. |
| Rangareddy | Light to Moderate rain likely to occur at Isolated places | NIL | NIL |
| Hyderabad | Light to Moderate rain likely to occur at Isolated places | NIL | NIL |
| Medchal-Malkajgiri | Light to Moderate rain likely to occur at Isolated places | NIL | NIL |
| Vikarabad | Heavy Rainfall likely at isolated places | 1. Minor damage to agriculture and horticulture crop and plantation 2. Water Logging in low lying areas | Restricted movement. • Necessary advisory may be issued by Municipal corporation for displaying the warnings and necessary action for clearing water. • Necessary advisory may be issued by road, rail traffic department for traffic regulation. • Response force may be advised to take necessary action. |

| | | | |
|---------------|---|---|---|
| Sangareddy | Heavy Rainfall likely at isolated places | 1.Minor damage to agriculture and horticulture crop and plantation 2. Water Logging in low lying areas | Restricted movement. • Necessary advisory may be issued by Municipal corporation for displaying the warnings and necessary action for clearing water. • Necessary advisory may be issued by road, rail traffic department for traffic regulation. • Response force may be advised to take necessary action. |
| Medak | Heavy Rainfall likely at isolated places | 1.Minor damage to agriculture and horticulture crop and plantation 2. Water Logging in low lying areas | Restricted movement. • Necessary advisory may be issued by Municipal corporation for displaying the warnings and necessary action for clearing water. • Necessary advisory may be issued by road, rail traffic department for traffic regulation. • Response force may be advised to take necessary action. |
| Kamareddy | Heavy Rainfall likely at isolated places | 1.Minor damage to agriculture and horticulture crop and plantation 2. Water Logging in low lying areas | Restricted movement. • Necessary advisory may be issued by Municipal corporation for displaying the warnings and necessary action for clearing water. • Necessary advisory may be issued by road, rail traffic department for traffic regulation. • Response force may be advised to take necessary action. |
| Mahabubnagar | Light to Moderate rain likely to occur at Isolated places | NIL | NIL |
| Nagar Kurnool | Light to Moderate rain likely to occur at Isolated places | NIL | NIL |
| Wanaparthi | Light to Moderate rain likely to occur at Isolated places | NIL | NIL |
| Narayanpet | Light to Moderate rain likely to occur at Isolated places | NIL | NIL |

| | | | |
|------------------|---|-----|-----|
| Jogulamba Gadwal | Light to Moderate rain likely to occur at Isolated places | NIL | NIL |
|------------------|---|-----|-----|

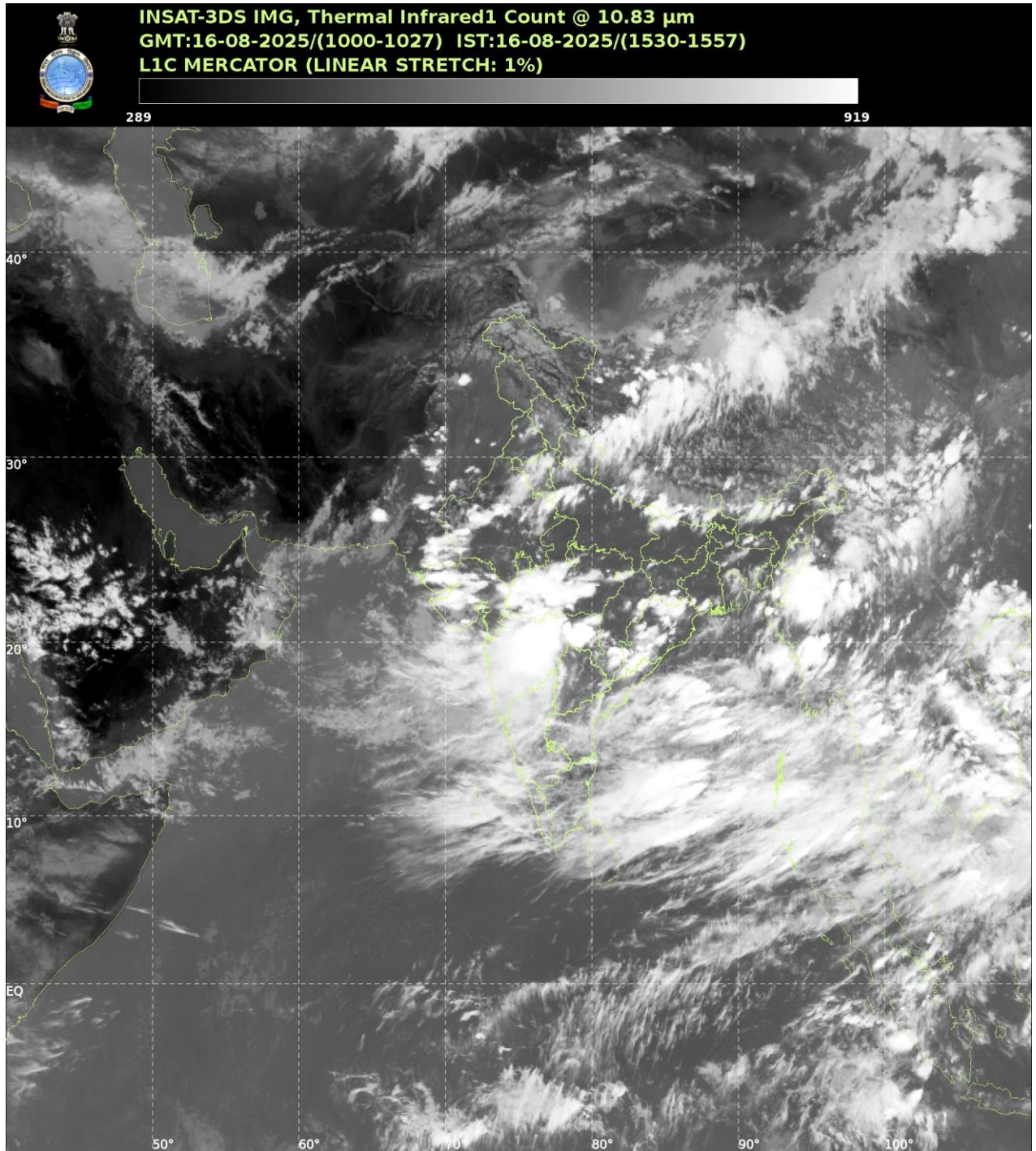
| | |
|---|---|
| <p>Persistent Flash Flood Threat (PFFT) till 1730 IST of 16-08-2025 : Low to Moderate flash flood threat likely over few watersheds & neighbourhoods of following Met Sub-divisions during next 6 hours.</p> <p>Telangana - Adilabad and Nirmal districts. Surface runoff/ Inundation may occur at some fully saturated soils & low-lying areas over Area of Concern (AoC) as shown in map due to expected rainfall occurrence in next 6 hours.</p> | <p>Product: NCUM PFFT Timescale: 06-hr Region: "REGIONAL" Product Date: 2025-08-16 06:00 UTC Valid Date: 2025-08-16 12:00 UTC</p>  |
|---|---|

Telangana Development Planning Society
Today's Rainfall (mm) from 16/08/2025 08:30Hrs to 16/08/2025 16:00Hrs

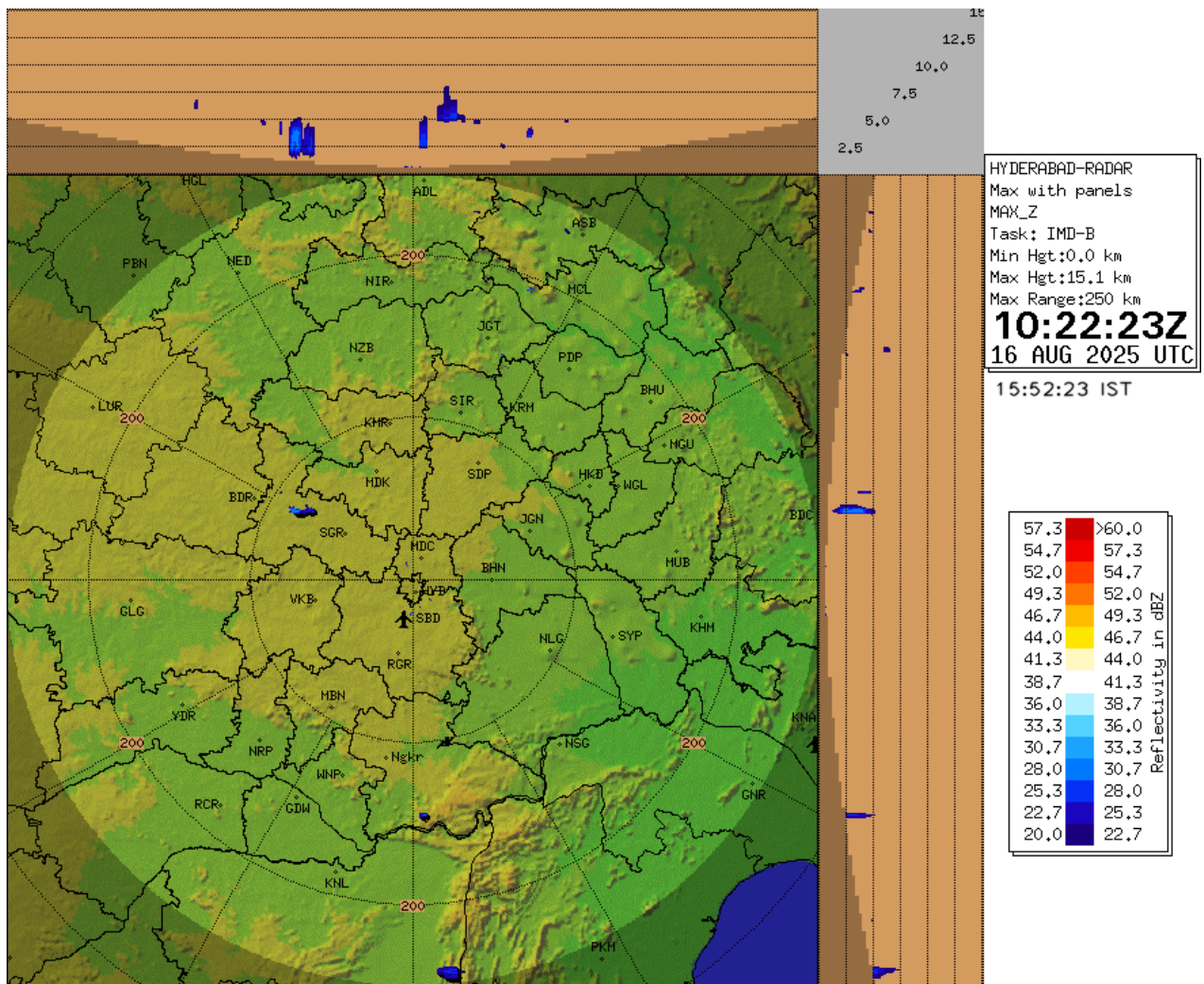
| S.No | Aws Id | District | Mandal | Location | Rainfall (mm) |
|------|--------|---------------|------------------|-------------------------------|---------------|
| 1 | 10665 | Adilabad | Tamsi | Tamsi | 173.8 |
| 2 | 10664 | Adilabad | Talamadugu | Talamadugu | 170.0 |
| 3 | 11399 | Adilabad | Mavala | Ramnagar (ARS) | 166.5 |
| 4 | 30139 | Adilabad | Sathnala | Sathnala | 155.8 |
| 5 | 12027 | Adilabad | Adilabad (Urban) | Adilabad Urban (Collectorate) | 150.0 |
| 6 | 10639 | Adilabad | Gudihatnoor | Gudihatnoor | 148.5 |
| 7 | 10503 | Adilabad | Sirkonda | Sirkonda (Tehsil Office) | 147.0 |
| 8 | 10635 | Mancherial | Kannepalli | Kannepalli | 140.8 |
| 9 | 10640 | Adilabad | Indervelly | Heerapur | 138.5 |
| 10 | 10310 | Adilabad | Ichoda | Ichoda | 129.0 |
| 11 | 10502 | Adilabad | Gadiguda | Lokari K | 126.5 |
| 12 | 10641 | Adilabad | Jainad | Jainad | 124.3 |
| 13 | 10538 | Mancherial | Bheemini | Bheemini | 118.5 |
| 14 | 10658 | Mancherial | Nennel | Nennel | 102.3 |
| 15 | 10648 | Kumuram Bheem | Kerameri | Kerameri | 100.0 |
| 16 | 30137 | Kumuram Bheem | Dahegaon | Kunchavelli | 98.3 |
| 17 | 10630 | Adilabad | Bazarhathnoor | Bazarhathnoor | 94.0 |
| 18 | 10660 | Kumuram Bheem | Rebbena | Rebbena | 92.8 |
| 19 | 10642 | Kumuram Bheem | Jainoor | Jainoor | 89.3 |
| 20 | 10657 | Adilabad | Narnoor | Narnoor | 88.8 |
| 21 | 11396 | Mancherial | Kannepalli | Jankapur | 86.0 |
| 22 | 10991 | Kumuram Bheem | Kagaznagar | Jambuga | 75.3 |
| 23 | 10643 | Mancherial | Jaipur | Jaipur | 74.5 |
| 24 | 10637 | Kumuram Bheem | Dahegaon | Dahegaon | 71.5 |
| 25 | 10501 | Adilabad | Bheempoor | Arii (T) | 70.8 |
| 26 | 10669 | Adilabad | Utnoor | Utnoor X Road | 69.8 |
| 27 | 10638 | Mancherial | Dandeoally | Veloanoor | 68.3 |

| | | | | | |
|----|-------|---------------|--------------|--------------------------|-------------|
| 28 | 10135 | Mancheria | Mancheria | Patha Mancheria | 68.3 |
| 29 | 11391 | Mancheria | Hajipur | Hajipur | 67.5 |
| 30 | 10888 | Mancheria | Tandur | Tandur | 65.0 |
| 31 | 11929 | Adilabad | Bela | Chapralla | 64.8 |
| 32 | 30138 | Kumuram Bheem | Kerameri | Dhanora | 63.3 |
| 33 | 10834 | Mancheria | Bellampally | Bellampally | 62.3 |
| 34 | 11460 | Jagtial | Dharmapuri | Nerella | 61.3 |
| 35 | 40006 | Mancheria | Nasipur | GM-Office, Srirampur | 58.3 |
| 36 | 10306 | Jagtial | Dharmapuri | Buddeshpalli-Dharmapuri | 57.3 |
| 37 | 10517 | Kumuram Bheem | Penchikalpet | Yelkapalle | 56.5 |
| 38 | 11895 | Kumuram Bheem | Rebbena | Vankulam | 55.3 |
| 39 | 10846 | Kumuram Bheem | Kagaznagar | Kagaznagar | 54.8 |
| 40 | 10435 | Adilabad | Boath | Pochara | 51.5 |
| 41 | 10829 | Kumuram Bheem | Asifabad | Asifabad | 50.0 |
| 42 | 10138 | Mancheria | Luxettipet | Shantapur | 49.5 |
| 43 | 10994 | Nirmal | Pembi | Pembi | 49.0 |
| 44 | 11896 | Kumuram Bheem | Tiryani | Ginnedari | 48.8 |
| 45 | 11392 | Mancheria | Hajipur | Ryali | 47.8 |
| 46 | 10516 | Kumuram Bheem | Lingapur | Lingapur (Tehsil Office) | 47.5 |
| 47 | 10520 | Mancheria | Nasipur | Nasipur | 47.5 |
| 48 | 11099 | Jagtial | Medipalle | Medipalle | 47.3 |
| 49 | 11114 | Jagtial | Velgatoor | Velgatoor | 44.0 |
| 50 | 11110 | Jagtial | Sarangapur | Sarangapur | 43.5 |
| 51 | 10847 | Mancheria | Kasipet | Kondapur | 42.8 |
| 52 | 11489 | Jagtial | Raikal | Allipur | 41.8 |
| 53 | 10832 | Nirmal | Kuntala | Kuntala | 41.0 |
| 54 | 11492 | Peddapalli | Ramagundam | Ramagundam | 40.0 |
| 55 | 11389 | Nirmal | Lokeshwaram | Abdullapur | 39.8 |
| 56 | 10214 | Jagtial | Korutla | Korutla | 39.3 |
| 57 | 10859 | Adilabad | Neradigonda | Neradigonda | 39.0 |
| 58 | 11979 | Nizamabad | Bodhan | Kaldurki | 38.8 |
| 59 | 11403 | Nirmal | Mudhole | Mudhole (ARS) | 38.3 |
| 60 | 11493 | Jagtial | Beerpur | Kolvai | 37.8 |

| | | | | | |
|----|-------|------------|-----------------|--------------------------|-------------|
| 61 | 11374 | Nizamabad | Donkeshwar | Tondakur | 37.8 |
| 62 | 11397 | Nirmal | Mamda | Tandra | 36.5 |
| 63 | 10200 | Nizamabad | Ranjai | Ranjai | 36.0 |
| 64 | 10858 | Nirmal | Mudhole | Edbid | 36.0 |
| 65 | 20007 | Nizamabad | Nizamabad Rural | Palda | 35.5 |
| 66 | 10540 | Nirmal | Nirmal | Vishwanathpet | 35.0 |
| 67 | 10508 | Jagtial | Buggaram | Sirkonda | 34.3 |
| 68 | 10990 | Nirmal | Basar | Basar | 34.3 |
| 69 | 11169 | Nizamabad | Navipet | Navipet | 34.0 |
| 70 | 10150 | Nirmal | Bhainsa | Bhainsa | 33.8 |
| 71 | 10224 | Nizamabad | Makloor | Lakmapoor | 33.8 |
| 72 | 10217 | Nizamabad | Nandipet | Ch_Kondur | 33.3 |
| 73 | 30002 | Mancheri | Jannaram | Tapalpur | 32.5 |
| 74 | 10855 | Nirmal | Sarangapur | Jam (Sainagar) | 32.5 |
| 75 | 11161 | Nizamabad | Dharpally | Dharpally | 32.5 |
| 76 | 11376 | Nizamabad | Bodhan | Chinna Mavandhi | 31.8 |
| 77 | 11107 | Jagtial | Raikai | Raikai | 31.8 |
| 78 | 11100 | Jagtial | Metpalle | Metpalle | 31.0 |
| 79 | 11362 | Nizamabad | Arnur | Magidi | 31.0 |
| 80 | 10853 | Nirmal | Mamda | Mamda | 31.0 |
| 81 | 11459 | Jagtial | Dharmapuri | Jaina | 30.8 |
| 82 | 12028 | Nirmal | Khanapur | Khanapur (Tahsil Office) | 30.8 |
| 83 | 10542 | Peddapalli | Dharmaram | Dharmaram | 30.3 |
| 84 | 11373 | Nizamabad | Makloor | Madanpalle | 30.3 |
| 85 | 10854 | Mancheri | Mandamarri | Andugulapet | 30.3 |
| 86 | 11174 | Nizamabad | Yedapalle | Yedapalle | 30.3 |
| 87 | 10527 | Nirmal | Soan | Pakpatla | 30.0 |
| 88 | 10825 | Nirmal | Dilawarpur | Dilawarpur | 29.8 |
| 89 | 10147 | Nirmal | Nirmal Rural | Akkapur | 29.8 |
| 90 | 30097 | Nirmal | Dasturabad | Dasturabad | 29.8 |
| 91 | 11146 | Nizamabad | Balkonda | Balkonda | 29.5 |
| 92 | 10183 | Nizamabad | Bodhan | Bellai | 29.5 |
| 93 | 11359 | Nizamabad | Aloor | Aloor | 29.3 |



SATELLITE IMAGE: 1530-1557 IST



RADAR IMAGE: 15:52 UTC

| COLOR CODES | |
|-------------|-------------|
| Risk Level | Response |
| Very Low | No Action |
| Low | Be Updated |
| Medium | Be Prepared |
| High | Take Action |

RAINFALL INTENSITY

| Terminology | Rainfall Range in (mm) | Terminology | Rainfall Range in (mm) |
|----------------|------------------------|-------------------------|------------------------|
| Light spell | 1 cm/hr | Very intense spell | 3-5 cm/hr |
| Moderate spell | 1-2 cm/hr | Extremely intense spell | 5-10 cm/hr |
| Intense spell | 2-3 cm/hr | Cloud burst | >10 cm/hr |

RAINFALL CATEGORIES

| Terminology | Rainfall Range in (mm) | Terminology | Rainfall Range in (mm) |
|---------------------|------------------------|--------------------------|------------------------|
| Very light rainfall | Trace-2.4 | Heavy rainfall | 64.5 - 115.6 |
| Light rainfall | 2.5 - 15.5 | Very heavy rainfall | 115.6 - 204.4 |
| Moderate rainfall | 15.6 - 64.6 | Extremely heavy rainfall | >=204.5 |

డా.కె. నాగరత్న / Dr. K. Nagarathna / डॉ. के। नागरत्ना
సైంటిస్ట్-యఫ్ & హెడ్ / Scientist-F & Head / वैज्ञानिक-एफ
వాతావరణ కేంద్రం - హైదరాబాద్ / M.C. Hyderabad / मौसम केंद्र - हैदराबाद
హైదరాబాద్- 500 016 / Hyderabad- 500 016 / हैदराबाद - 500 016